

Planning Committee Meeting

20 December 2011

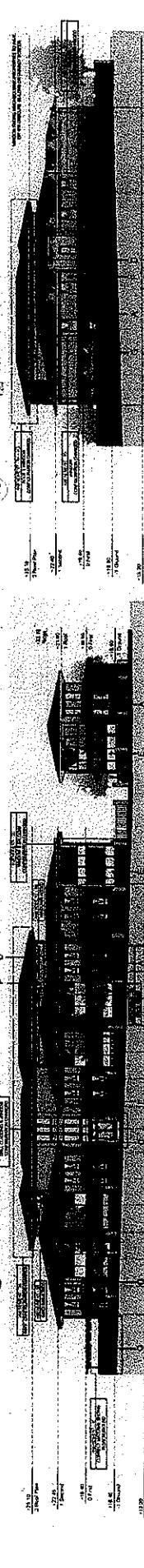
Item 4.12

**7 Centre Road, Brighton East
(Application No. 2006/1023/1 – Ward: Northern)**

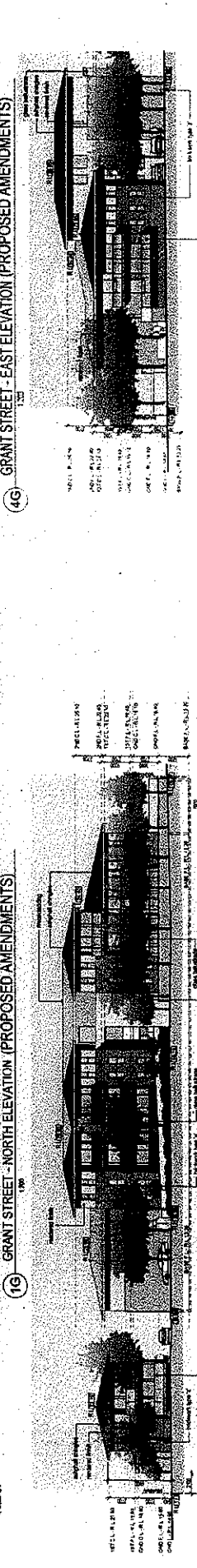
Pages: 9



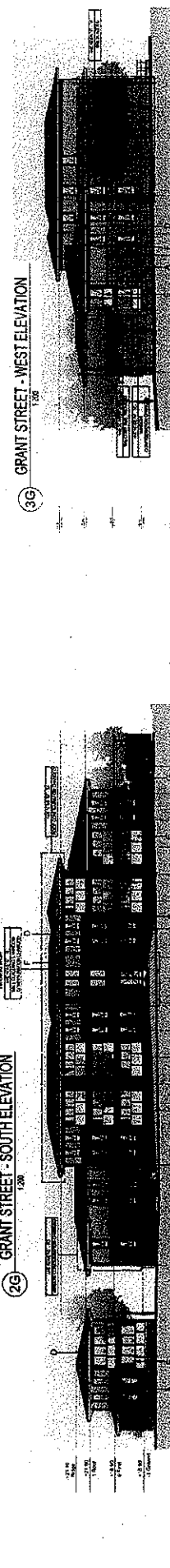
19 GRANT STREET - NORTH ELEVATION
1:200



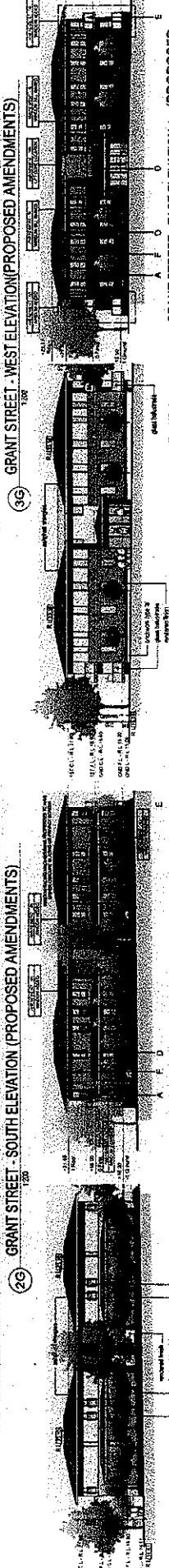
4G GRANT STREET - EAST ELEVATION
1:200



19 GRANT STREET - NORTH ELEVATION (PROPOSED AMENDMENTS)
1:200



29 GRANT STREET - SOUTH ELEVATION
1:200



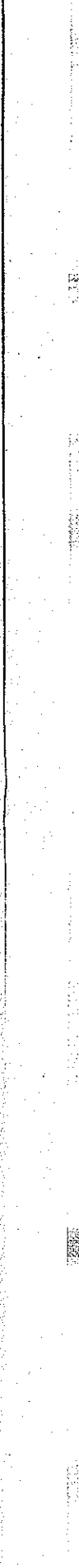
29 GRANT STREET - SOUTH ELEVATION (PROPOSED AMENDMENTS)
1:200



36 GRANT STREET - WEST ELEVATION
1:200

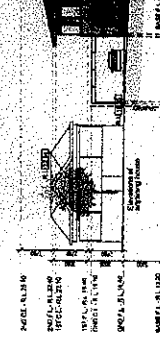


36 GRANT STREET - WEST ELEVATION (PROPOSED AMENDMENTS)
1:200

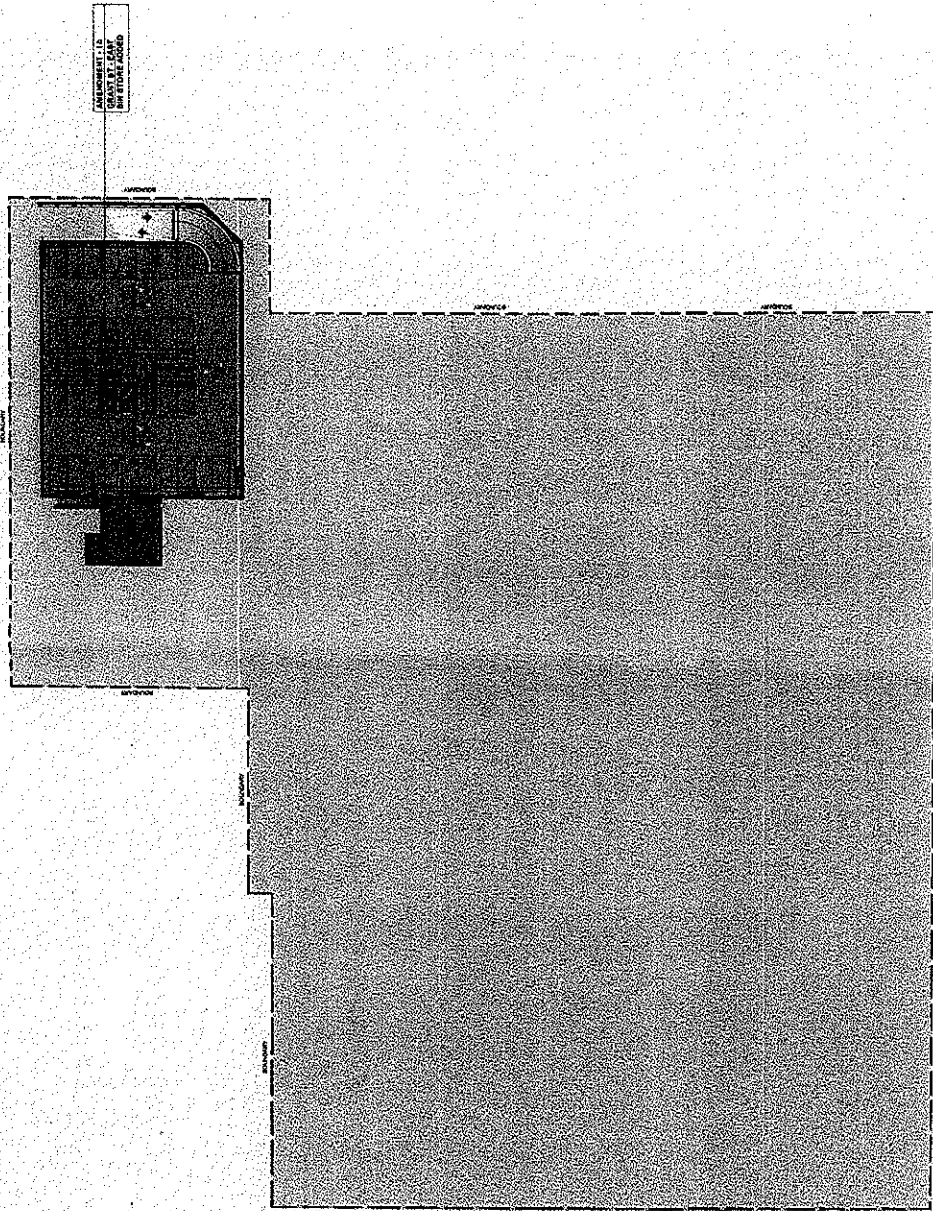


5G GRANT STREET - EAST ELEVATION 1 (PROPOSED AMENDMENTS)
1:200

30/11/2011
DOCS/11/15868

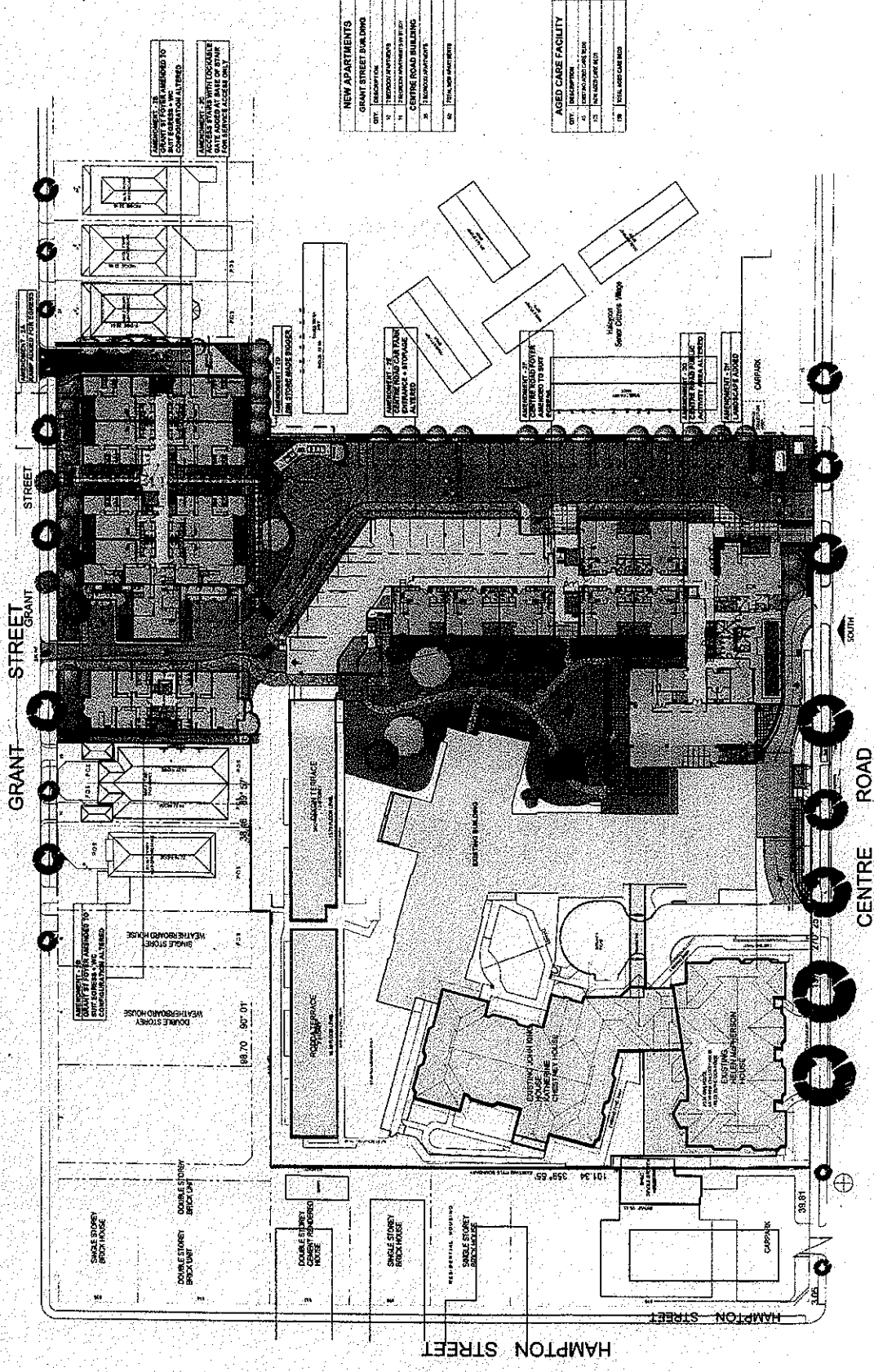


woodhead



PARCHIMENTO PER
SOSTA VEHICOLI

BASEMENT CARPARK 1/200



CONCRETE FINISHED TO SUIT BRICKS & WC COMPLETION ALTERED

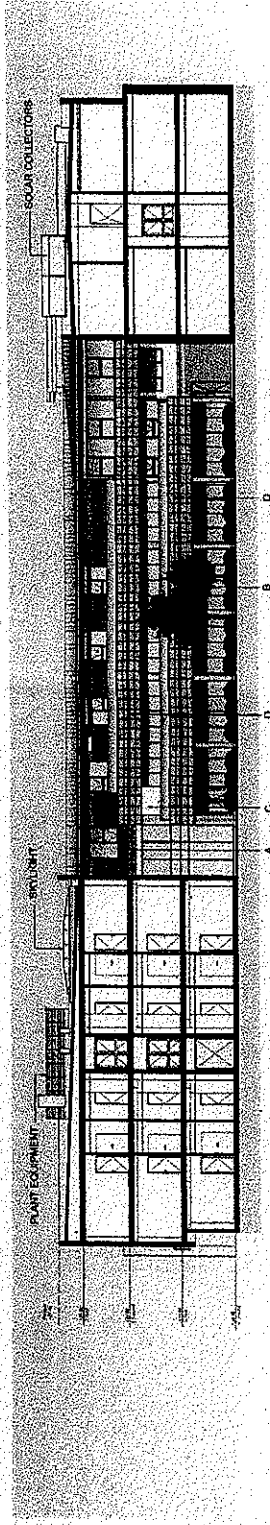
ACCESS STAIRS WITH LOCKABLE DOOR TO SUIT STAIRS ON STAIR CASE TO SUIT STAIRS

NEW APARTMENTS	
GRANT STREET BLDG 1000	DESCRIPTION
10	NEW APARTMENTS
11	NEW APARTMENTS
12	NEW APARTMENTS
13	NEW APARTMENTS
14	NEW APARTMENTS
15	NEW APARTMENTS
16	NEW APARTMENTS
17	NEW APARTMENTS
18	NEW APARTMENTS
19	NEW APARTMENTS
20	NEW APARTMENTS
21	NEW APARTMENTS
22	NEW APARTMENTS
23	NEW APARTMENTS
24	NEW APARTMENTS
25	NEW APARTMENTS
26	NEW APARTMENTS
27	NEW APARTMENTS
28	NEW APARTMENTS
29	NEW APARTMENTS
30	NEW APARTMENTS
31	NEW APARTMENTS
32	NEW APARTMENTS
33	NEW APARTMENTS
34	NEW APARTMENTS
35	NEW APARTMENTS
36	NEW APARTMENTS
37	NEW APARTMENTS
38	NEW APARTMENTS
39	NEW APARTMENTS
40	NEW APARTMENTS
41	NEW APARTMENTS
42	NEW APARTMENTS
43	NEW APARTMENTS
44	NEW APARTMENTS
45	NEW APARTMENTS
46	NEW APARTMENTS
47	NEW APARTMENTS
48	NEW APARTMENTS
49	NEW APARTMENTS
50	NEW APARTMENTS
51	NEW APARTMENTS
52	NEW APARTMENTS
53	NEW APARTMENTS
54	NEW APARTMENTS
55	NEW APARTMENTS
56	NEW APARTMENTS
57	NEW APARTMENTS
58	NEW APARTMENTS
59	NEW APARTMENTS
60	NEW APARTMENTS
61	NEW APARTMENTS
62	NEW APARTMENTS
63	NEW APARTMENTS
64	NEW APARTMENTS
65	NEW APARTMENTS
66	NEW APARTMENTS
67	NEW APARTMENTS
68	NEW APARTMENTS
69	NEW APARTMENTS
70	NEW APARTMENTS
71	NEW APARTMENTS
72	NEW APARTMENTS
73	NEW APARTMENTS
74	NEW APARTMENTS
75	NEW APARTMENTS
76	NEW APARTMENTS
77	NEW APARTMENTS
78	NEW APARTMENTS
79	NEW APARTMENTS
80	NEW APARTMENTS
81	NEW APARTMENTS
82	NEW APARTMENTS
83	NEW APARTMENTS
84	NEW APARTMENTS
85	NEW APARTMENTS
86	NEW APARTMENTS
87	NEW APARTMENTS
88	NEW APARTMENTS
89	NEW APARTMENTS
90	NEW APARTMENTS
91	NEW APARTMENTS
92	NEW APARTMENTS
93	NEW APARTMENTS
94	NEW APARTMENTS
95	NEW APARTMENTS
96	NEW APARTMENTS
97	NEW APARTMENTS
98	NEW APARTMENTS
99	NEW APARTMENTS
100	NEW APARTMENTS

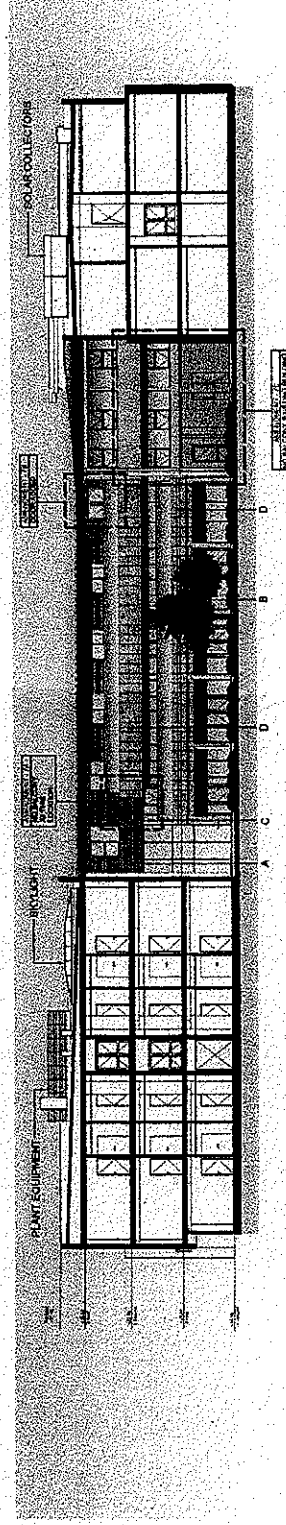
AGED CARE FACILITY	
101	DESCRIPTION
102	DESCRIPTION
103	DESCRIPTION
104	DESCRIPTION
105	DESCRIPTION
106	DESCRIPTION
107	DESCRIPTION
108	DESCRIPTION
109	DESCRIPTION
110	DESCRIPTION
111	DESCRIPTION
112	DESCRIPTION
113	DESCRIPTION
114	DESCRIPTION
115	DESCRIPTION
116	DESCRIPTION
117	DESCRIPTION
118	DESCRIPTION
119	DESCRIPTION
120	DESCRIPTION
121	DESCRIPTION
122	DESCRIPTION
123	DESCRIPTION
124	DESCRIPTION
125	DESCRIPTION
126	DESCRIPTION
127	DESCRIPTION
128	DESCRIPTION
129	DESCRIPTION
130	DESCRIPTION
131	DESCRIPTION
132	DESCRIPTION
133	DESCRIPTION
134	DESCRIPTION
135	DESCRIPTION
136	DESCRIPTION
137	DESCRIPTION
138	DESCRIPTION
139	DESCRIPTION
140	DESCRIPTION
141	DESCRIPTION
142	DESCRIPTION
143	DESCRIPTION
144	DESCRIPTION
145	DESCRIPTION
146	DESCRIPTION
147	DESCRIPTION
148	DESCRIPTION
149	DESCRIPTION
150	DESCRIPTION



GROUND FLOOR 1:250



TOWN PLANNING ELEVATION - NORTH



PROPOSED AMENDED ELEVATION - NORTH

WOODHEAD ARCHITECTS

1000 WEST 10TH AVENUE

BOULDER, CO 80502

TEL: 303.440.1111

WWW.WOODHEADARCHITECTS.COM

WOODHEAD

A

B

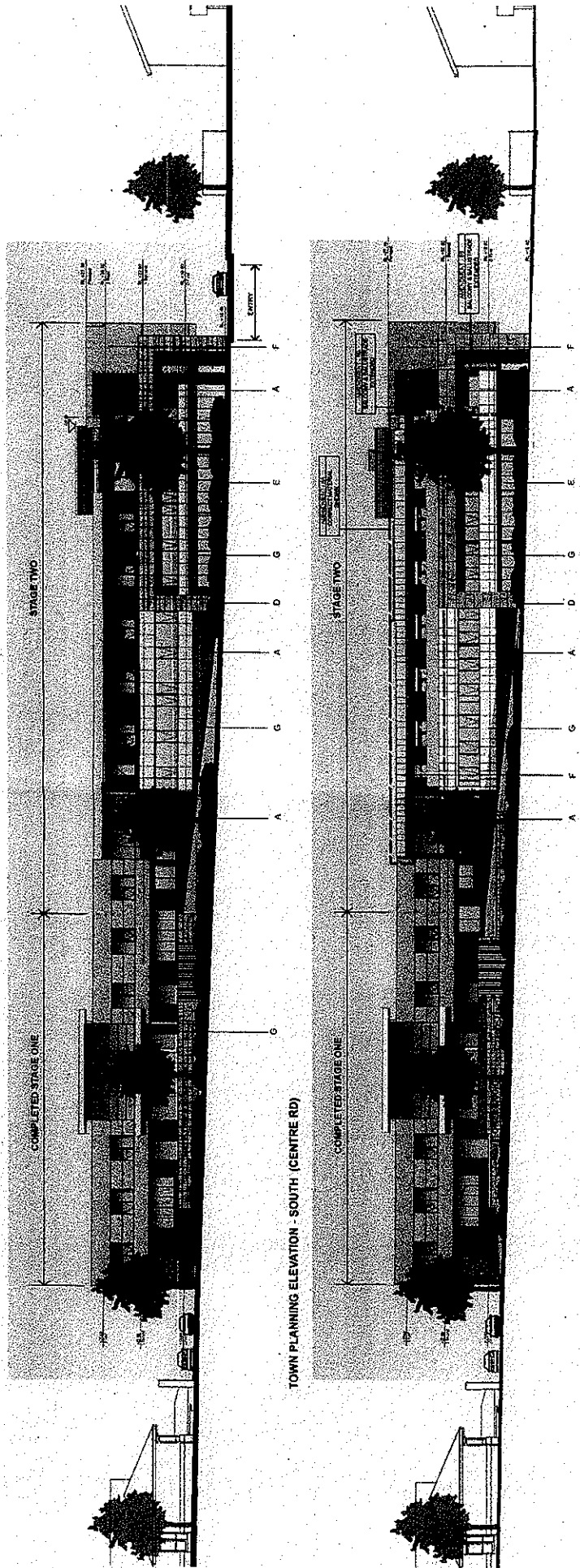
C

D

E

F

G



TOWN PLANNING ELEVATION - SOUTH (CENTRE RD)

PROPOSED AMENDED ELEVATION - SOUTH (CENTRE ROAD)

WOODHEAD ARCHITECTURE

1000 WEST 10TH AVENUE, SUITE 100

EDMONTON, ALBERTA T6C 0E7

TEL: (780) 443-1111

WWW.WOODHEADARCHITECTURE.COM

WOODHEAD ARCHITECTURE

1000 WEST 10TH AVENUE, SUITE 100

EDMONTON, ALBERTA T6C 0E7

TEL: (780) 443-1111

WWW.WOODHEADARCHITECTURE.COM

WOODHEAD