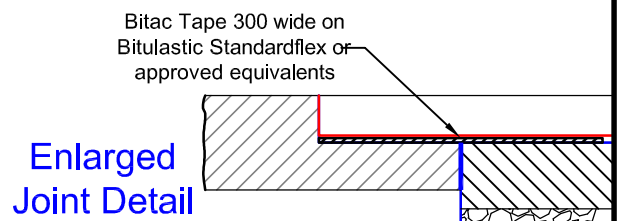


**Notes**

1. When existing asphalt thickness is greater or equal to 30mm use the following steps and drawing above: **STAGE Ia** Sawcut ; **STAGE Ib** Excavation and drain laying ; **STAGE Ic** Backfill ; **STAGE Id** Tack coat ; **STAGE II** First layer of asphalt; **STAGE IIIa** Profile ; **STAGE IIIb** Spray Bitulastic Standardflex and lay Bitac on top ; **STAGE IIIc** Tack coat ; **STAGE IVa** Final layer of asphalt ; **STAGE IVb** Bitulastic on crack.
2. When existing asphalt is less than 30mm Bitac and profiling not to be included, instead four saw cuts allowed. (see standard drawing No. BCC204)
3. **Tack Coat** . A tack coat shall be applied to the approved base course surface on which the hot mix asphalt is to be placed. Tack coat shall consist of cationic bitumen emulsion and shall be applied to a dry surface, free from puddles. Tack coat shall be sprayed in a uniform film over the entire shared trail and vehicle turnaround surface as detailed on the Drawings. Unless otherwise directed, the application rate for bitumen emulsion tack coat shall be 0.15 to 0.3litres/m2 (60% Bitumen content) or 0.3 to 0.6 litres/m2 (30% bitumen content) in accordance with current VicRoads Standards. Tack coat is to set and become tacky prior to application of the hot mix asphalt.

Council require that all road openings follow the conditions detailed on the back of road opening permits. All back filled trenches are to be maintained in a safe condition and sealed with p.c.m. until council contractor is able to seal the trench/hole.



<p><b>Bayside</b> CITY COUNCIL</p>	Standard Drawing Title <b>ASPHALT PERMANENT REINSTATEMENT</b> (EXISTING ASPHALT $\geq$ 30mm)		Standard Drawing No. <b>BCC205</b> Page 1 of 1	Rev: <b>A</b>
	Scale <b>1:20</b>	References to: <b>BCC204</b>	Approved Manager Engineering Services 	
			Date: 2-Feb-09	