

NOTES

GENERAL

1. Footpath, driveway, layback & channel shall be poured as one except for streets with bluestone kerb and channel. Bluestone channel shall be retained.
2. Concrete integral colour: charcoal 2% by weight in grey cement. 4% to match blue stone areas. Plain colour can be used following on site approval by Council officer's discretion.
3. Finish shall be stipple trowel except layback and channel with smooth finish.
4. Tooling grooves to be approved by superintendent.
5. Bullnose should not be constructed unless approved by superintendent.
6. Layback width should match channel width.

BLUESTONE CHANNELS

Bluestone channel to be relaid as per BCC302

RESIDENTIAL VEHICLE CROSSING

Concrete: minimum 125mm depth and compressive strength shall be 25MPa at 28 days. Reinforcement not required unless directed by Bayside City Council and if reinforcement is used concrete compressive strength shall be min. 32MPa at 28 days.

COMMERCIAL / INDUSTRIAL VEHICLE CROSSINGS

Concrete: minimum 150mm depth and compressive strength shall be 32MPa at 28 days reinforcement: f72 mesh top. (50mm cover)

SEPARATOR ISLAND

1. Subject to Bayside City Council approval.
2. Not to be paved.
3. Width is between back of kerbs.
4. In most cases, kerbs of entire separator shall be formed, with a saw cut in neighbouring crossing.

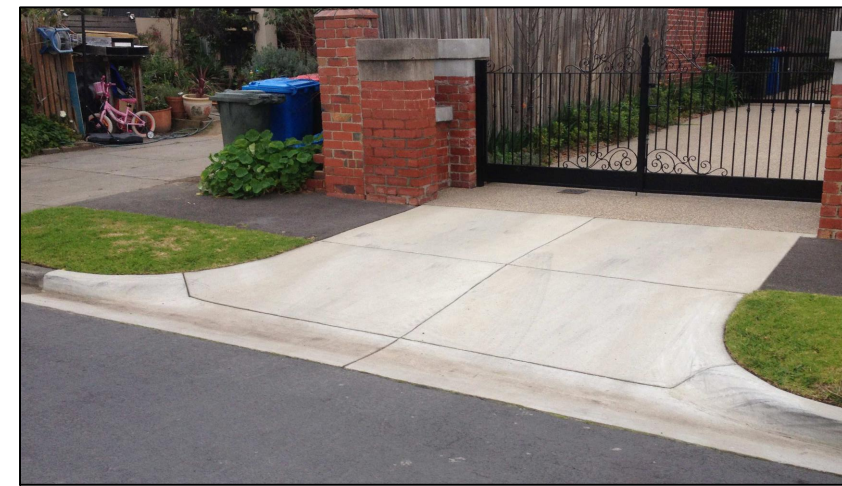
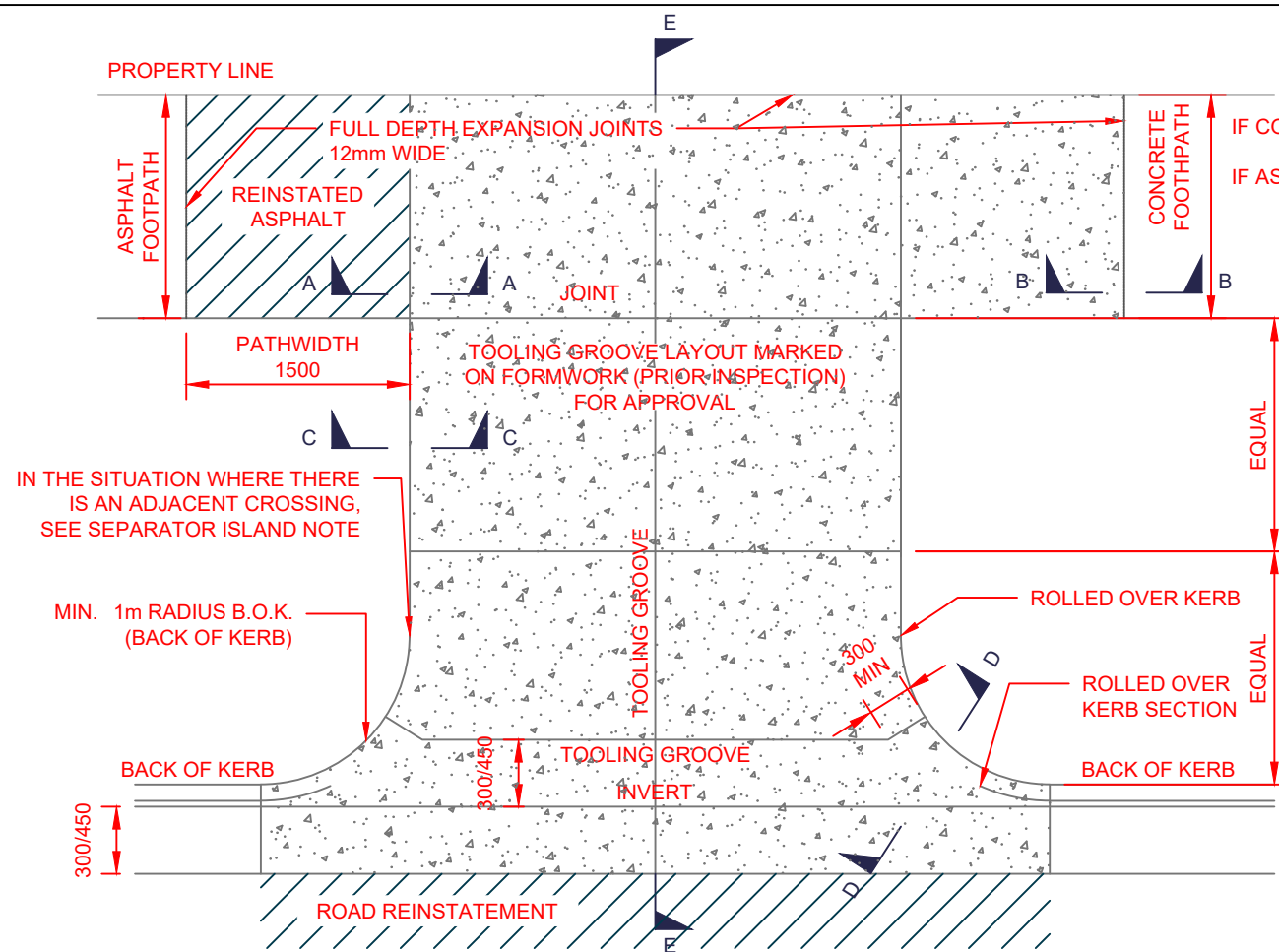
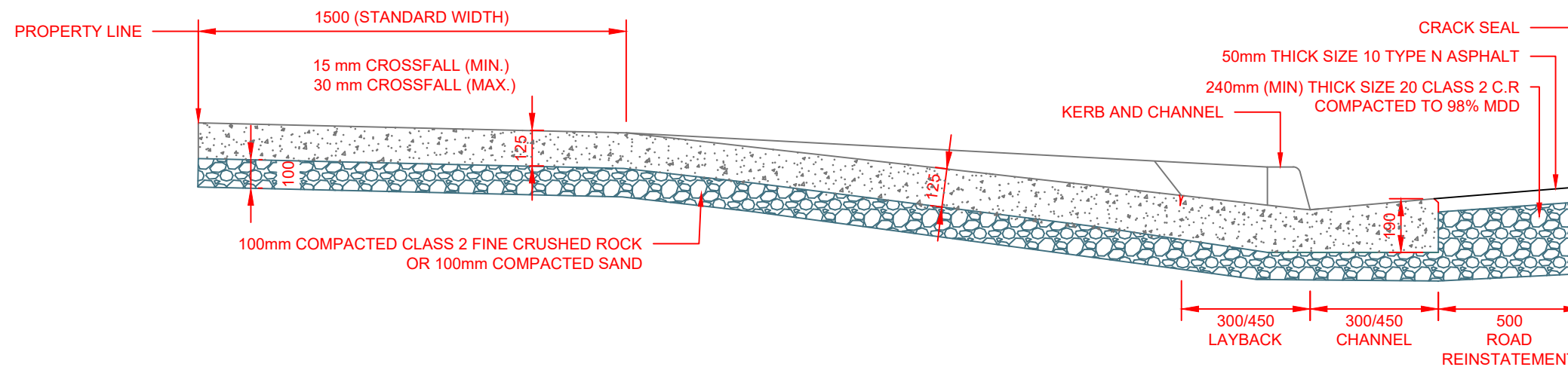


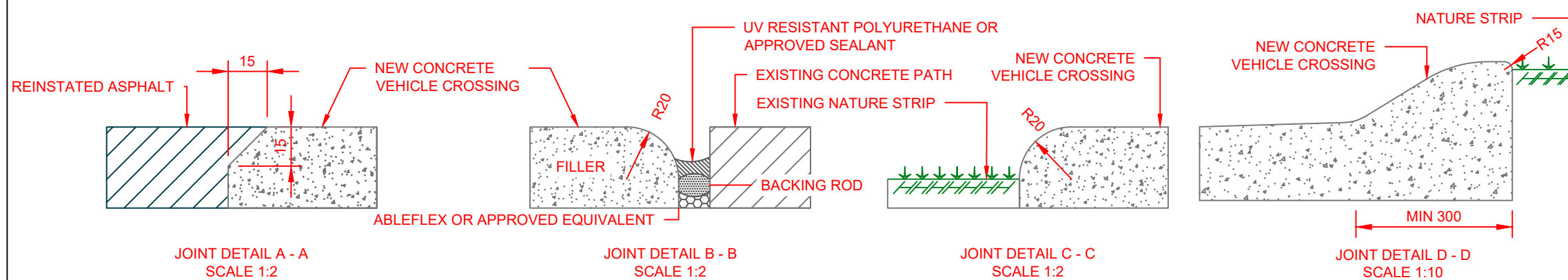
PHOTO OF TYPICAL VEHICLE CROSSOVER



**PLAN VIEW
SCALE 1:50**



**CROSS SECTION E - E
SCALE 1:20**



TYPICAL CROSS SECTIONS



Bayside
CITY COUNCIL

Approved
Manager City Works

Date:

Scale 1:2, 1:10, 1:20, 1:50	References to: BCC302, BCC201, BCC202
Standard Drawing Title VEHICLE CROSSINGS IN STREETS WITH NATURE STRIPS	
Standard Drawing No. BCC401C	Rev: C