

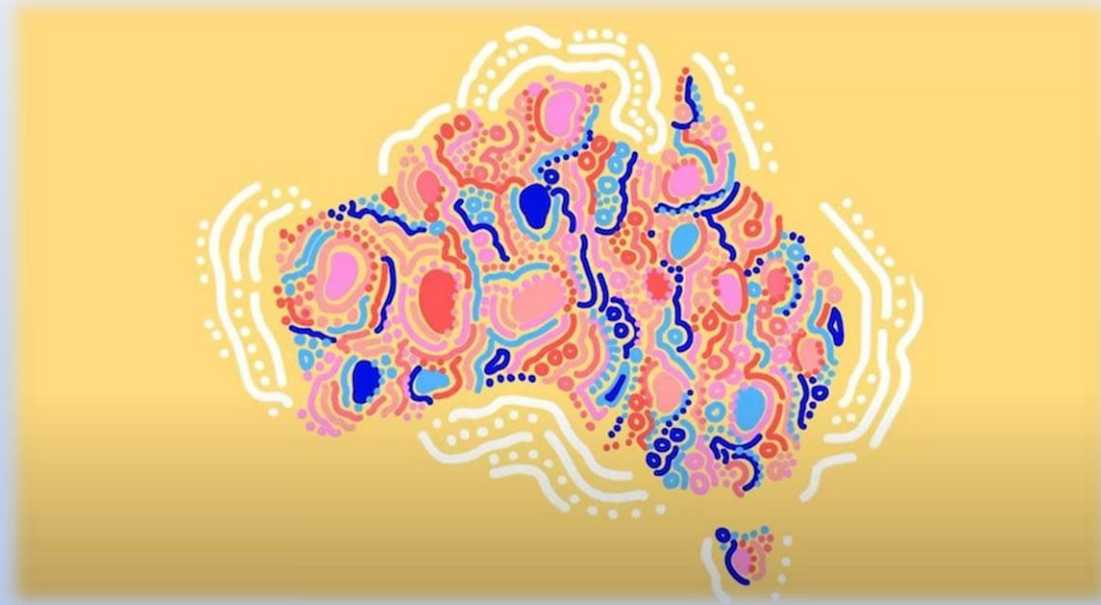
FAIR ACCESS POLICY ROADMAP

Bayside City Council Sports Club
Development Forum
Monday 19 June



OFFICIAL

Acknowledgement of Country



OFFICIAL

OFFICIAL

SPORT, GENDER EQUALITY AND FAIR ACCESS



ADELE FOX

She/her

A/Policy Manager

Office for Women in Sport and Recreation

OFFICIAL



\$806 million bid for women's cricket

Successful bids for the five new Women's Premier League in India broke the record set by the IPL in 2008

Women and girls participation in AFL community clubs has grown by 45% since 2017

Overall growth in programs including AusKick, JuniorX and schools has grown by 74%!



31% of women participated in sport once a week in 2021-22

There is demand from women and girls to be physically active, sporting opportunities are increasing!



Matilda's World Cup Match Moved

FIFA move women's world cup match to stadium with 83,500 seats to meet demand. 500,000 tickets to the world cup have already been sold!



1.43 million people tuned in to watch the womens final at the 2023 Australian Open

1.3 million watched the mens final in the same year



Over 850,000 women and girls participate in Netball

Netball is the most popular team sport for women and girls in Australia. Over 110,000 men and boys also participate.



WHY FAIR ACCESS?

Equality



Equity



- Women and girls often report that they don't receive equal access to playing spaces, training venues and other sporting resources (equipment, coaches etc)
- When they do receive access to the best quality facilities, it is often reported that women and girls are then schedule at the worst times.

WHY FAIR ACCESS?

“

Imagine a world where everyone receives equal encouragement, opportunity, access, support and reward.

Free of bias.

Free of stereotypes.

Free of limitations.

A world where everyone has the change to realise their sporting dreams.

”



THE ROADMAP: LGAs

Education
August 2022 – 2023

Readiness
2023 – 30 June 2024

Progress
1 July 2024 onwards

- An Australia-first policy that aims to give women and girls fairer access to community sport facilities
- A three-phased approach that requires councils to have policies in place by 1 July 2024 to remain eligible for state government infrastructure funding
- LGA policies must demonstrate how women and girls will be prioritised when it comes to accessing and using community sports infrastructure, leading to a more welcoming, inclusive and diverse community sport sector



FAIR ACCESS PRINCIPLES

- Provide guidance to councils and the sport sector on how women and girls can be included, welcomed and treated fairly in community sport
- Are not mandatory, but act as added support and guidance material
- Variations of these principles will likely be demonstrated in council policies

1
Community sports infrastructure and environments are genuinely welcoming, safe, and inclusive

2
Women and girls can fully participate in all aspects of community sport and active recreation, including as a player, coach, administrator, official, volunteer and spectator

3
Women and girls will have equitable access to and use of community sport infrastructure:

- a. of the highest quality available and most convenient
- b. at the best and most popular competition and training times and locations
- c. to support existing and new participation opportunities, and a variety of sports

4
Women and girls should be equitably represented in leadership and governance roles

5
Encourage and support all user groups who access and use community sport infrastructure to understand, adopt and implement gender equitable access and use practices

6
Prioritise access, use and support to all user groups who demonstrate an ongoing commitment to gender equitable access and use of allocated community sport infrastructure

PRINCIPLES IN ACTION

Principle	Ways this principle might address gender equity
<p>1</p> <p>Community sports infrastructure and environments are genuinely welcome, safe and inclusive</p>	<ul style="list-style-type: none"> • Inclusive and non-offensive photos are displayed in club rooms • Respectful language is used on and off the field • Outdoor lighting is turned on in carparks after dark • Club committees create access schedules for change rooms that provide a safe environment on game and training days • Club awards that are reflective of and achievable for all players
<p>2</p> <p>Women and girls can fully participate in all aspects of community sport and active recreation, including as a player, coach, administrator, official, volunteer and spectator</p>	<ul style="list-style-type: none"> • Provide training and mentorship for club members who want to learn to coach, officiate or join a committee • Consider the other ways that your facility is used. For example, evening walking groups that need lighting, school groups that need change rooms, or fitness classes that need toilet and baby change facilities. • Provide spectators and visitors with access to all amenities, including bathrooms and baby change facilities.

Principle	Ways this principle might address gender equity
<p data-bbox="63 401 86 423">3</p> <p data-bbox="144 245 873 311">Women and girls will have equitable access to and use of community sport infrastructure:</p> <ul style="list-style-type: none"> <li data-bbox="144 360 873 425">a) Of the highest quality available and most convenient <li data-bbox="144 436 873 502">b) At the best and most popular competition and training times and locations <li data-bbox="144 513 873 578">c) To support existing and new participation opportunities, and a variety of sports 	<ul style="list-style-type: none"> <li data-bbox="950 262 1875 371">• Consult with players, coaches and parents to understand the needs of participants before allocating training and game times <li data-bbox="950 382 1875 447">• Share a training schedule at the start of a season, fairly distributing facility use between all users <li data-bbox="950 458 1875 567">• Consider modified or participation based programs that may attract new people to your club such as AFL 9's, 3X3 Hustle, Freestyle Golf or Hockey Sixers
<p data-bbox="63 811 86 833">4</p> <p data-bbox="144 769 904 835">Women and girls should be equitably represented in leadership and governance roles</p>	<ul style="list-style-type: none"> <li data-bbox="950 671 1767 780">• Set goals within your club around the number of women on a committee, in executive and coaching/officiating roles <li data-bbox="950 791 1767 857">• Support women and girls to complete their coach/official accreditation <li data-bbox="950 868 1767 977">• Create a coaching mentor program or pathway to support women in developing their skills and experience within your sport

Principle	Ways this principle might address gender equity
<p data-bbox="73 380 98 401">5</p> <p data-bbox="150 301 904 445">Encourage and support all user groups who access and use community sport infrastructure to understand, adopt and implement gender equitable access and use policies</p>	<ul data-bbox="958 281 1812 504" style="list-style-type: none"> <li data-bbox="958 281 1812 390">• Council supports women and girls within club communities to complete training or accreditation programs <li data-bbox="958 397 1812 504">• Council only allowing professional sporting competitions with equal prize money to take place within their facilities
<p data-bbox="73 734 98 756">6</p> <p data-bbox="150 656 915 800">Prioritise use and support to all user groups who demonstrate an ongoing commitment to gender equitable access and use of allocated community sport infrastructure</p>	<ul data-bbox="958 634 1870 857" style="list-style-type: none"> <li data-bbox="958 634 1870 743">• Council provides discounted lease charges to clubs that support and encourage the growth of women and girls participation in their sport <li data-bbox="958 750 1870 857">• Clubs with women and/or girls teams are prioritised and given first allocation of pavilions, courts and grounds.

FAIR ACCESS WILL BE AS SUCCESSFUL AS YOU MAKE IT: YOUR LGA AND SPORT ORGANISATION CANNOT DO IT ALONE

WHAT YOU CAN DO TO GET AHEAD?



Raise awareness of the Roadmap, discuss its principles and the role your club or association can play with committee, coaches and players



Review current training times, change room allocations and resource provisions. Consider if they are fair or if there are ways to improve for next season.



Review any existing policies, strategies and codes of conduct that your club or association has and update them in ways that will support and encourage participation by all.



Welcome the input of women and girls. Consult with your players, volunteers and supporters to find out what is working well and what isn't. Work together to find sustainable solutions.



Connect with your contact at Bayside City Council and begin a conversation about how you can prepare or improve your club environment for 1 July 2024.

OFFICIAL

THANKS

If you have any questions please
feel free to contact us!

Fair Access Team
fairaccess@sport.vic.gov.au

OFFICIAL

